

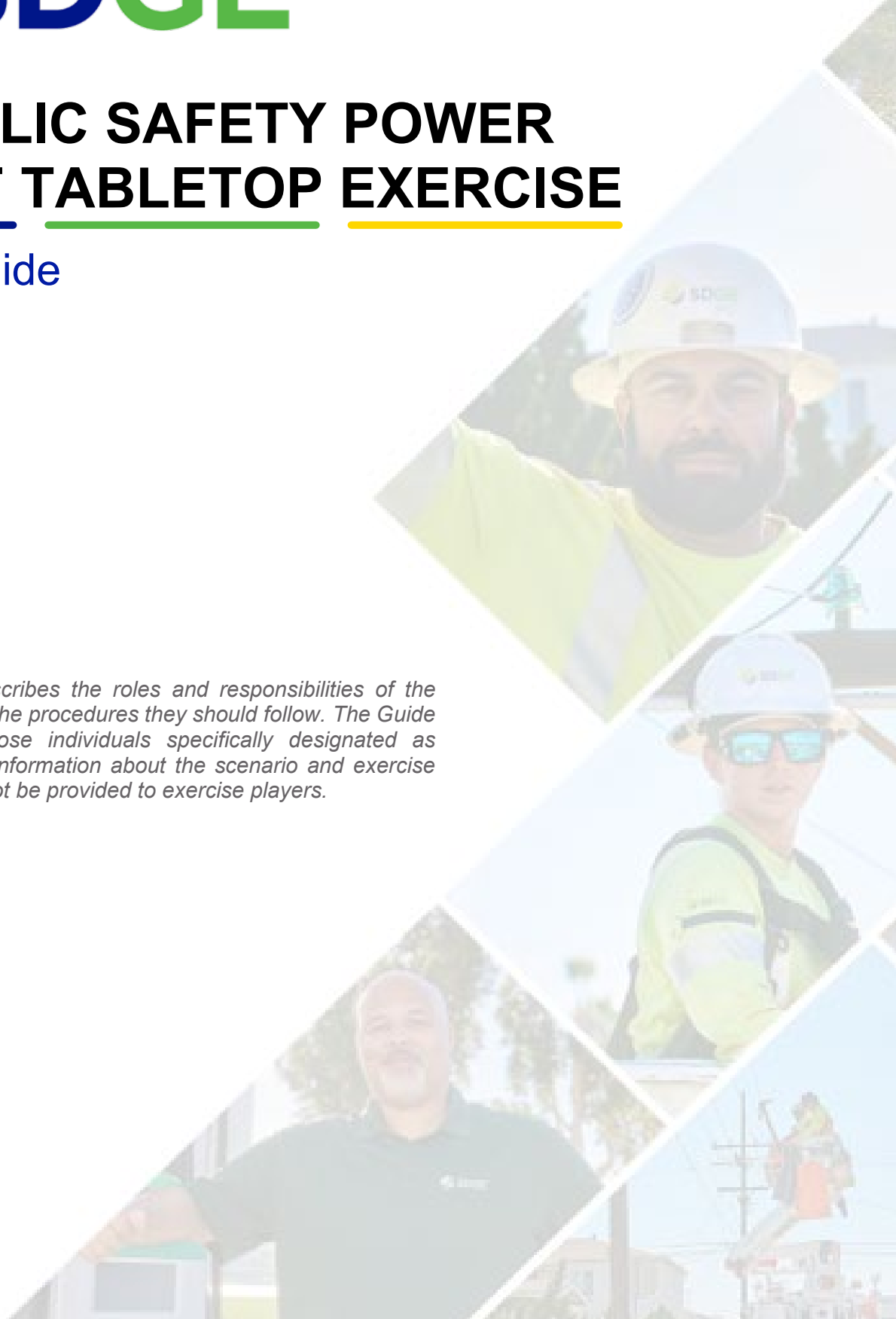


2023 PUBLIC SAFETY POWER SHUTOFF TABLETOP EXERCISE

Facilitator Guide

April 11, 2023

The Facilitator Guide describes the roles and responsibilities of the exercise facilitator(s) and the procedures they should follow. The Guide is distributed only to those individuals specifically designated as facilitators as it contains information about the scenario and exercise administration. It should not be provided to exercise players.





This Page Intentionally Left Blank.

TABLE OF CONTENTS

Table of Contents	II
Exercise Overview	1
Introduction	2
Facilitator Roles and Responsibilities	2
Exercise Schedule	3
Roles and Responsibilities	4
Exercise Guidelines	4
Exercise Assumptions	4
Exercise Structure	5
Exercise Logistics	6
Module 1 – PSPS Activation Protocols/ Potential to De-energize	7
Module 2 – Decision to De-energize/ De-energization Initiated	21
Module 3 – Initiating Re-energization Protocols/All PSPS Lines Re-energized	26
Hot Wash	31
Closing Remarks/ENDEX	31
Appendix A: Facilitator Guidance	A-1
Appendix B: Exercise Scenario Timeframe	B-1
Appendix C: Exercise Staff and Players	C-1



This Page Intentionally Left Blank.

EXERCISE OVERVIEW

EXERCISE NAME	Public Safety Power Shutoff (PSPS) Tabletop Exercise (TTX)
EXERCISE DATES	April 11, 2023, from 8:00 a.m. – 12:00 p.m.
PURPOSE	The PSPS TTX is designed to provide forum for internal participants and external stakeholders to enhance their knowledge, understanding, and ability to implement appropriate actions to mitigate, prepare, and respond to PSPS events while adhering to CPUC compliance guidelines.
OBJECTIVES	<ul style="list-style-type: none">• Enhance participants' knowledge and understanding of all SDG&E's Wind/PSPS ConOps Annex.• Demonstrate an understanding in effectively implementing PSPS operations in alignment with SDG&E's PSPS plans, policies, and procedures.• Identify and discuss the critical services, interdependencies, and expectations of both internal and external stakeholders during PSPS operations.• Discuss the communication and coordination protocols both internal and between SDG&E and external stakeholders.
THREAT OR HAZARD	Elevated or extreme fire weather threat event
SCENARIO	Conditions triggering PSPS activation with wildfire
PARTICIPATING ORGANIZATIONS	<ul style="list-style-type: none">• SDG&E• Local, State, Federal, Tribal and Nongovernmental External Partners
POINT OF CONTACT	Jessica Kunert Emergency Management Training Manager jkunert@sdge.com

INTRODUCTION

This document serves as the 2023 Public Safety Power Shut-Off Tabletop Exercise Facilitator Guide. This document is to be used in tandem with the Tabletop Exercise Conduct Briefing Slides and Player Placemat. This document provides guidance to assist the exercise facilitator and should not be given to exercise players.

This document will also serve as a guideline to help the facilitator focus on exercise objectives and to assure all issues are explored as thoroughly as possible within the available time. It gives the approximate timing of delivery for each slide, high-level talking points, and supplemental questions or issues to raise during tabletop exercise conduct.

The Facilitator Guide reminds facilitators to encourage all participants to contribute to the discussion, and to iterate to them that they are discussing hypothetical situations in a no-fault environment. This document supports building and maintaining an environment where all the participants feel comfortable speaking honestly and where differences of opinion are respected.

FACILITATOR ROLES AND RESPONSIBILITIES

The main goal of facilitation is to create continuous discussion amongst players regarding the provided topics. As a subject-matter expert on PSPS operations, the facilitator will be expected to have an overall awareness of internal plans and procedures. This will allow the facilitator to also provide additional information or resolves questions as required throughout the exercise.

Below are some additional helpful tips to be an effective facilitator:

- Speak competently and confidently without dominating the conversation.
- Allow participants to learn from one another.
- Enforce positive and respectful interaction.
- Encourage constructive differences in opinion.
- Emphasize key findings and discussion points.
- Summarize or clarify difficult content or discussions.
- Control group dynamics and manage strong personalities.
- Keep participation balanced by involving and engaging the entire group.
- Utilize supplemental discussion questions to further focus or provoke discussion.
- Keep discussions on track and drive play to meet exercise objectives.

Additional facilitator guidance can be found in **Appendix A**.

PRIOR TO THE EXERCISE

- Review the Facilitator Guide and Tabletop Exercise Conduct Briefing Slides

DURING THE EXERCISE

- Conduct a quick round of introductions. The Facilitator will be able to see the full roster of participants in **Appendix C: Exercise Staff and Participants**.
- Ensure all participants are aware of the purpose of the event.
- Utilize the initial slides of the TTX Conduct Briefing Slides to begin the exercise and reference the Facilitator Guide as needed once the exercise has begun, specifically **Appendix A: Facilitator Guidance** which provides additional notes that align with the conduct briefing slides. Additionally, facilitator notes have also been included with discussion questions, to provide prompts and talking points that are applicable to the specific question.
- Ensure any pause for presenters to provide their necessary briefing information.
- Manage the discussion by keeping responses on topic and prioritize the questions should there be time constraints.

AFTER THE EXERCISE

- Lead the hot wash with all exercise participants.
- Answer questions or concerns regarding the exercise or topics of discussion.
- Reinforce key takeaways.
- Remind participants to complete the Participant Feedback Form.

EXERCISE SCHEDULE

TIME	ACTIVITY	FACILITATOR
7:30 AM – 7:45 AM	Player Arrival and Check-In	N/A
8:00 AM – 8:15 AM	Welcome/Introductions	SDG&E
8:15 AM – 8:30 AM	Exercise Overview	Prestige
8:30 AM – 9:45 AM	Module 1	SDG&E
9:45 AM – 10:00 AM	Break	N/A
10:00 AM – 11:00 AM	Module 2	SDG&E
11:00 AM – 11:45 AM	Module 3	SDG&E
11:45 AM – 12:00 PM	Hotwash/Closing Remarks	All
Post Event	Networking Lunch and Tour	All

ROLES AND RESPONSIBILITIES

The respective roles and responsibilities of those involved in the exercise are as follows:

- **Players.** Players are personnel who have an active role in discussing topics posed by the facilitator and other attendees.
- **Facilitator.** The facilitator provides any necessary situational information and moderates discussions. The facilitator also provides additional information or resolves questions as required.
- **Evaluators.** Evaluators observe, analyze, and provide feedback on a designated functional area of the exercise.
- **Observers.** Observers visit or view selected segments of the exercise. They must be invited to observe the exercise. Observers do not play in the exercise or perform any control or evaluation functions. Observers will view the exercise from a designated observation area and will be asked to remain within the observation area during the exercise.
- **Support Staff.** Individuals who perform administrative and logistical support tasks for the exercise. This can include notetaking to capture discussion topics, key decisions, and other pertinent after-action related items.

EXERCISE GUIDELINES

- This exercise will be held in an open, low-stress, no-fault environment. Varying viewpoints, even disagreements, are expected.
- Respond to the scenario using your knowledge of current plans and capabilities and insights derived from your training and experience.
- Decisions are not precedent setting and may not reflect your organization's final position on a given issue.
- This exercise is an opportunity to discuss and present multiple options and possible solutions that can inform pertinent plans, policies, and procedures.

EXERCISE ASSUMPTIONS

In any tabletop exercise (TTX), assumptions may be necessary to focus discussion and accomplish the intended objectives in the time allotted. Exercise attendees should accept that assumption is inherent and not allow these considerations to negatively impact their participation.

- This exercise is conducted in a no-fault learning environment wherein capabilities, plans, systems, and processes will be discussed and assessed.
- This exercise scenario is plausible, and events occur as presented.
- Attendees should consider their real-life roles and experience when examining proposed topics, interacting with other attendees, offering observations to the forum, and discussing strategic and tactical decisions.

EXERCISE STRUCTURE

OVERVIEW

This tabletop exercise will consist of three (3) modules, each containing a scenario brief/update followed by specific discussion questions addressing distinct stages of PSPS operations such as preparedness, response, and recovery activities. The five stages will be broken down across the modules in the following way:

- **Module 1:**
 - a. Stage 1: Activating PSPS Protocols/Potential to De-Energize
- **Module 2:**
 - a. Stage 2: Decision to De-Energize
 - b. Stage 3: De-Energization Initiated
- **Module 3:**
 - a. Stage 4: Initiating Re-energization Protocols
 - b. Stage 5: All PSPS Lines Re-energized

During the exercise, the facilitator will lead attendees through a series of questions surrounding scenario incidents that continue to progress through the lifecycle of a PSPS activation. The discussion questions are designed to drive the specific topics of conversation and accomplish exercise objectives. Discussion questions will focus on various topics, including but not limited to organization and agency operational processes, communication methods, customer programs/services, and data needs. The facilitator will ensure the conversation stays on topic and all attendees and departments represented have an opportunity to contribute.

While attendees address the discussion questions, the facilitator will keep track of which topics have been covered. The facilitator will use their best judgment with the order of the questions and which ones to skip, depending on time limitations.

Additional information about the exercise scenario can be found in **Appendix B: Exercise Scenario Timeframe**.

POST-EXERCISE ACTIVITIES

Immediately following the exercise, a participant participation form will be issued to all exercise participants for their thoughts about the design of the exercise and their overall experience. Exercise staff will also note discussions during the exercise, and evaluators will capture observations on the provided Exercise Evaluation Guides. All of these notes will then be utilized to develop the content of the TTX Summary Report, which will be distributed in the weeks following the Tabletop Exercise.

EXERCISE LOGISTICS

SAFETY

Exercise participant safety takes priority over exercise events. The following general requirements apply to the exercise:

- Participants may need to balance exercise play with real-world emergencies. Real-world emergencies take priority.
- Participants attending at SDG&E's San Diego campus will be alerted to the emergency exits, restrooms, and any other critical points of safety or evacuation at the start of the event.
- If a real-world emergency occurs, please notify the Exercise Director, Jessica Kunert immediately.

MODULE 1 – PSPS ACTIVATION PROTOCOLS/ POTENTIAL TO DE-ENERGIZE

SCENARIO UPDATE

Pre-Scenario Questions

1. (SDG&E) Meteorology—Before we go into the specific scenario, can you provide an overview of the general forecasting that is done and how it is determined that PSPS protocols may need to be activated?
 - a. Emergency Management—How is this information communicated to you and how is a decision made to activate PSPS Protocols?
 - b. Officer in Charge—What factors do you consider in determining whether or not to activate PSPS Protocols?
 - c. Emergency Management—What preparedness activities occur from decision to activate PSPS Protocols up to the 72-hour mark?

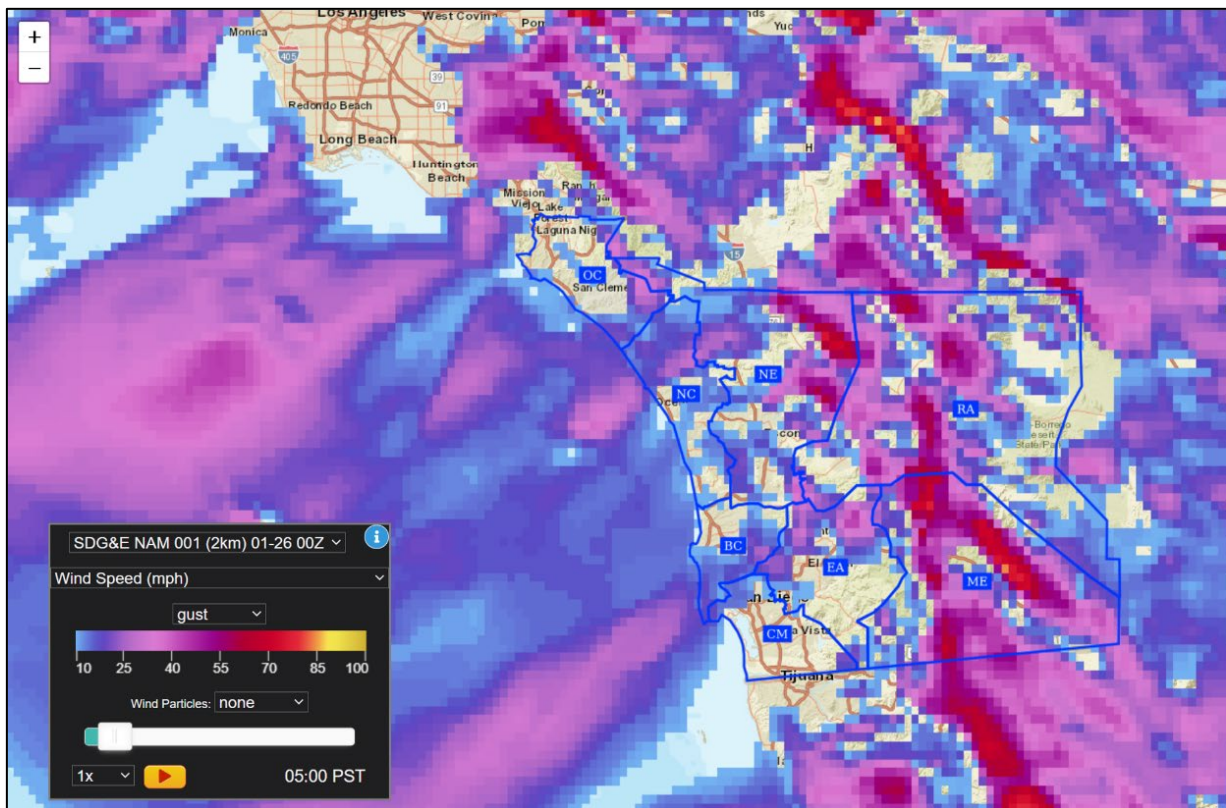
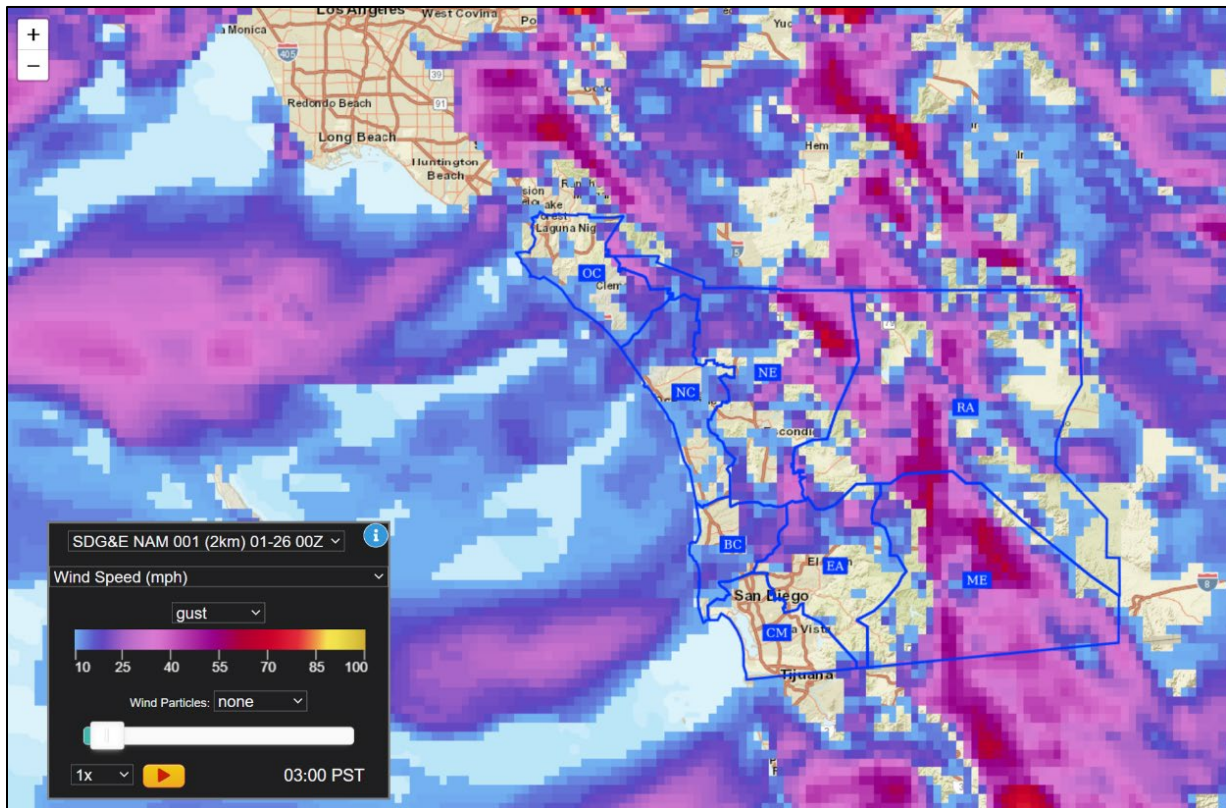
Facilitator: Thank you. At this point in the scenario all of the above-mentioned processes have occurred.

Scenario Overview

It is currently 72 hours in advance of an anticipated PSPS event. SDG&E is in Stage 1 of their PSPS response.

Weather Forecast



- Winds for this scenario were based on real world conditions that occurred during a strong Santa Ana wind event on January 26, 2023.
- Forecast models in advance of the event indicated that winds would surface in a mountain wave pattern. Such events are known for producing strong winds that occur outside of the “typical” Santa Ana wind footprint and are notoriously difficult to forecast.
- **(SDG&E)** To Meteorology: Could you please give us a brief overview of the forecast, threats, and risk at this stage of the scenario?



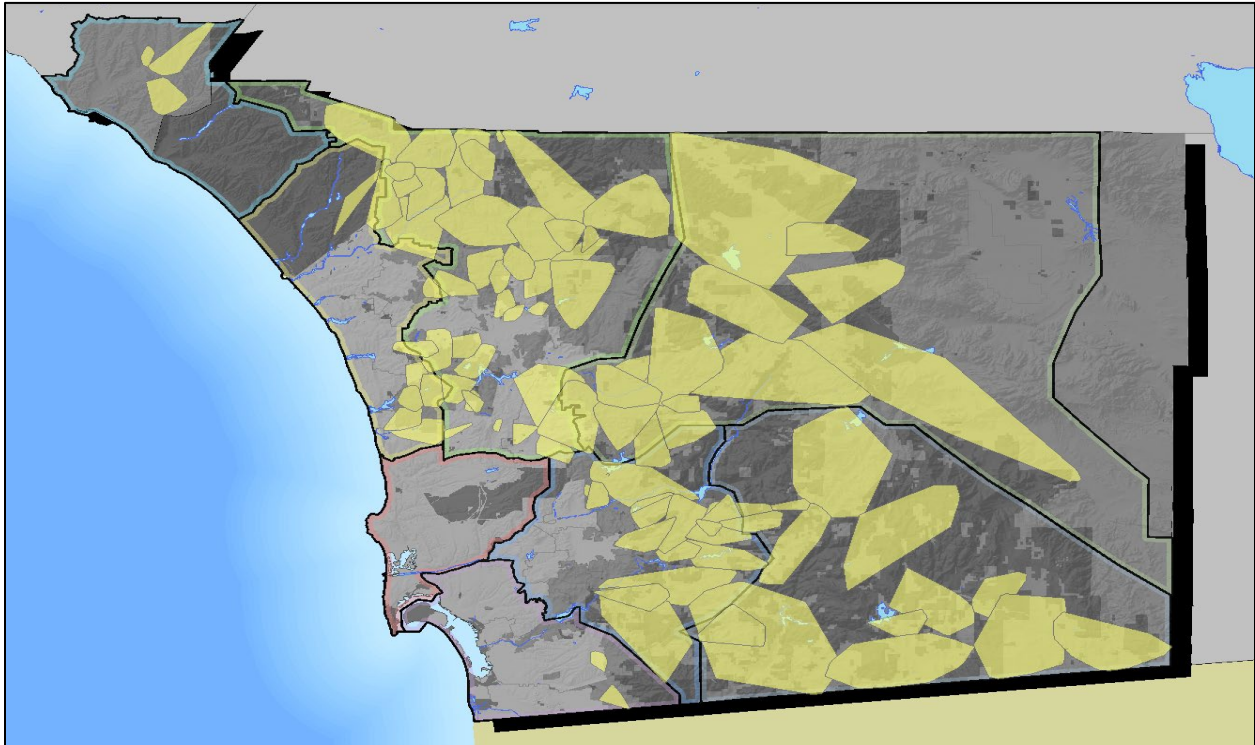
Fire Potential Index (FPI) and SAWTI Outlook

	Sat 4/08	Sun 4/09	Mon 4/10	Tue 4/11	Wed 4/12	Thu 4/13	Fri 4/14
ME	Elevated 13	Elevated 13	Elevated 14	Extreme 16	Elevated 14	Elevated 14	Elevated 14
RA	Elevated 13	Elevated 13	Elevated 14	Extreme 16	Elevated 14	Elevated 14	Elevated 14
EA	Elevated 13	Elevated 13	Elevated 13	Extreme 15	Elevated 14	Elevated 14	Elevated 13
NE	Elevated 13	Elevated 13	Elevated 13	Extreme 15	Elevated 14	Elevated 14	Elevated 13
OC	Normal 11	Elevated 12	Elevated 13	Extreme 15	Elevated 14	Elevated 13	Elevated 12
NC	Normal 11	Normal 11	Elevated 13	Extreme 15	Elevated 13	Elevated 12	Normal 11
BC	Normal 11	Normal 11	Elevated 13	Extreme 15	Elevated 13	Elevated 12	Normal 11
CM	Normal 11	Normal 11	Elevated 13	Extreme 15	Elevated 13	Elevated 12	Normal 11

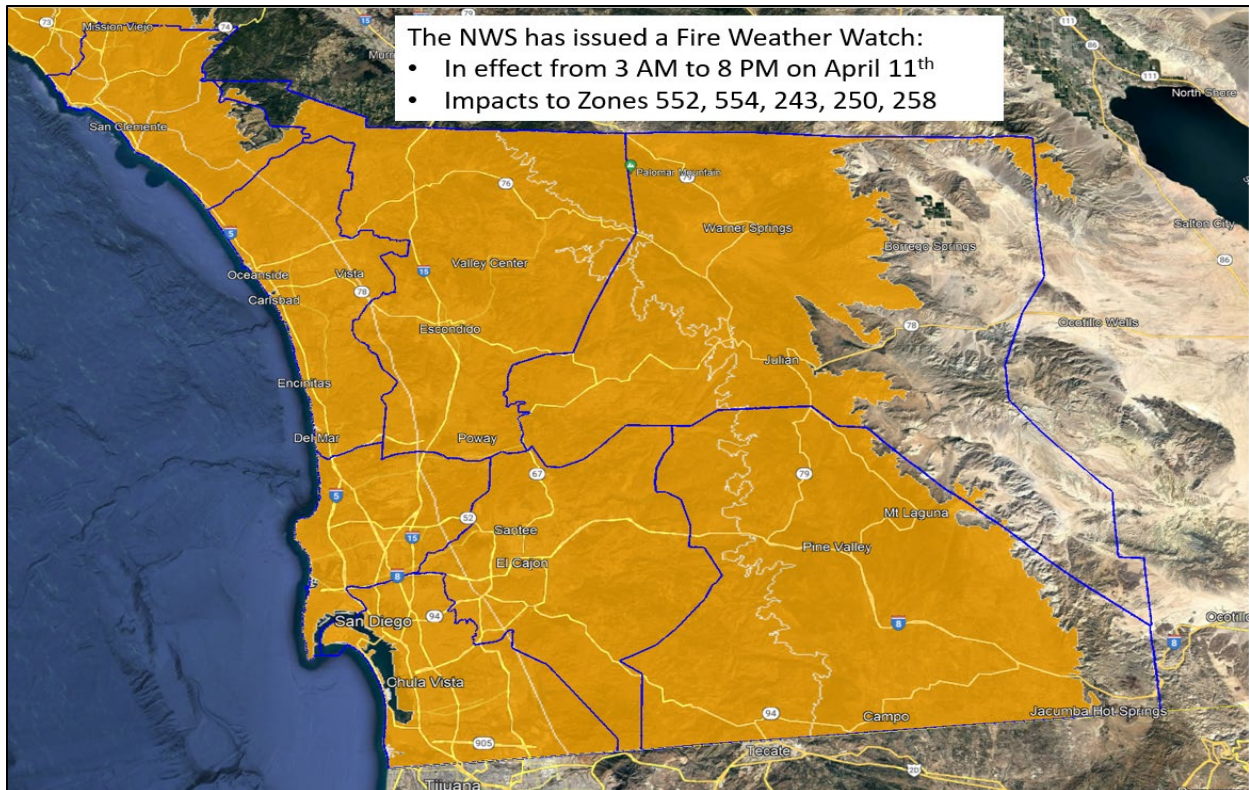
Flag Warning 72 Hours

 SANTA ANA WILDFIRE THREAT INDEX 					NO RATING Winds are either not expected, will not contribute to significant fire activity. MARGINAL Upon ignition, fires may grow rapidly. MODERATE Upon ignition, fires will grow rapidly and will be difficult to control. HIGH Upon ignition, fires will grow very rapidly, will burn intensely, and will be very difficult to control. EXTREME Upon ignition, fires will have extreme growth, will burn very intensely, and will be uncontrollable.
Zones	Sat/Apr 8	Sun/Apr 9	Mon/Apr 10	Tue/Apr 11	
Zone 1: LA-Ventura					
Zone 2: Orange-Inland Empire					
Zone 3: San Diego					
Zone 4: Santa Barbara					

GIS Potential Areas for PSPS at 72 Hours



Fire Watch 72 Hours



DISCUSSION QUESTIONS

Facilitator Notes

The discussion questions below have been categorized for the following participant groups:

- SDG&E-specific discussion questions are noted in **Green**.
- Stakeholders-specific discussion questions are noted in **Blue**.

Operational Considerations

1. **(SDG&E)** Electric Operations, please discuss your overarching responsibilities during Stage 1 of PSPS operations, at the 72-hour mark.
 - a. Note: Ask about pre-patrols, vegetation management, resource management, and their staffing plan if they do not mention it
2. **(SDG&E)** Officer in Charge, what are your main concerns and considerations at this point in the scenario?
 - a. How are operational concerns prioritized during this stage?

Notifications/Communications

1. **(SDG&E)** What information is being provided to customers and the general public at this stage in the operation? [Engage PIO if they don't participate]
 - a. To what extent are community partners and other PIOs engaged in this communication process?
2. **(SDG&E)** Which public safety partner or regulatory notifications need to be made in this stage and what type of information is included at the 72-hour mark?
 - a. Emergency Management (Mona)—Please discuss order of notification group processes if hasn't already been discussed.
3. **(SDG&E)** [Emergency Management] Can you discuss what tools are available for public safety partners to receive notifications and information about the potential PSPS at this stage?
4. **(Stakeholders)** Are the current notifications and communications discussed by SDG&E adequate for your organization to establish situational awareness/common operating picture?
 - a. What additional information would you need to effectively prepare?

Customer Programs/Services

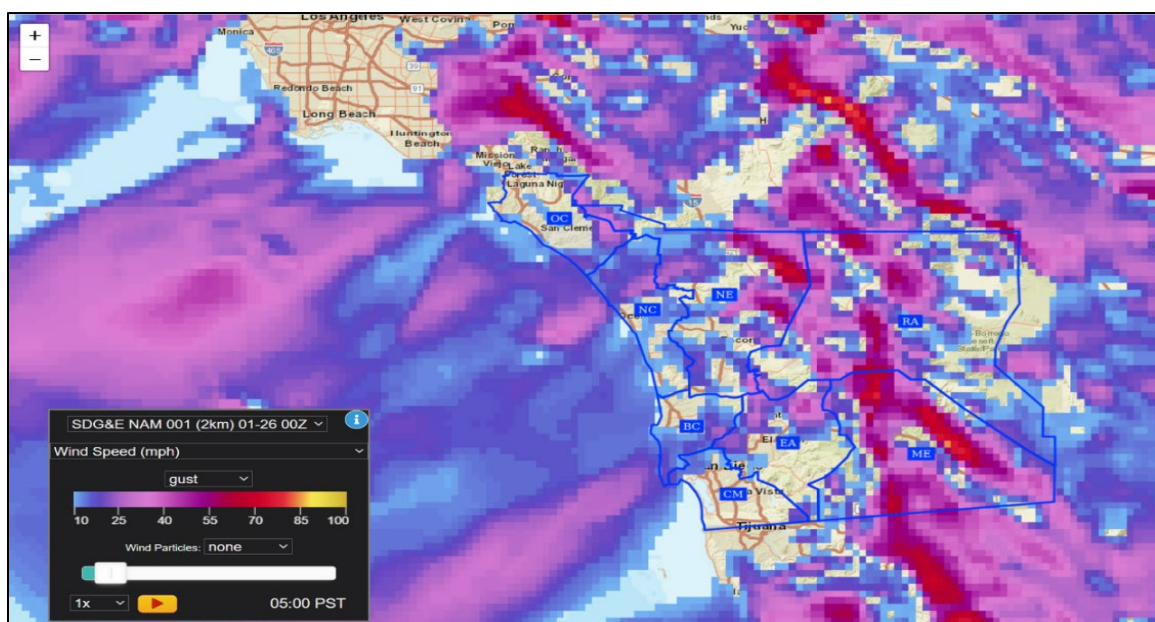
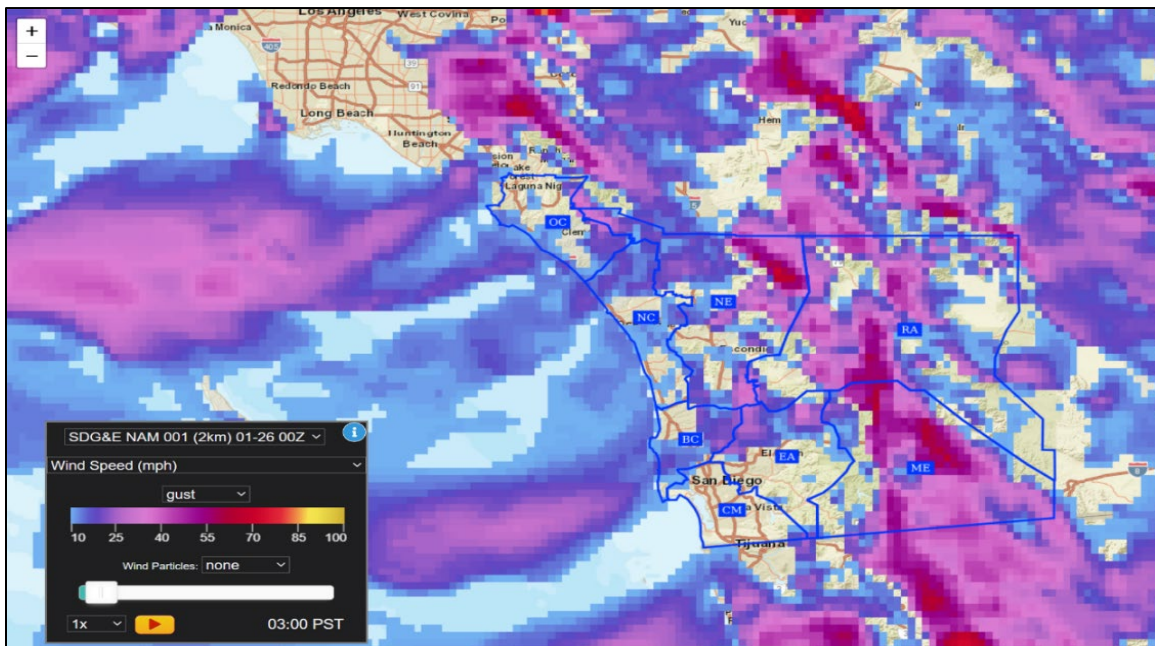
1. **(SDG&E)** [AFN] What outreach occurs for Access and Functional needs at the 72-hour mark and how do we ensure that we maintain coordination?
 - a. What if any changes or improvements have been made for the upcoming season in AFN coordination and response?

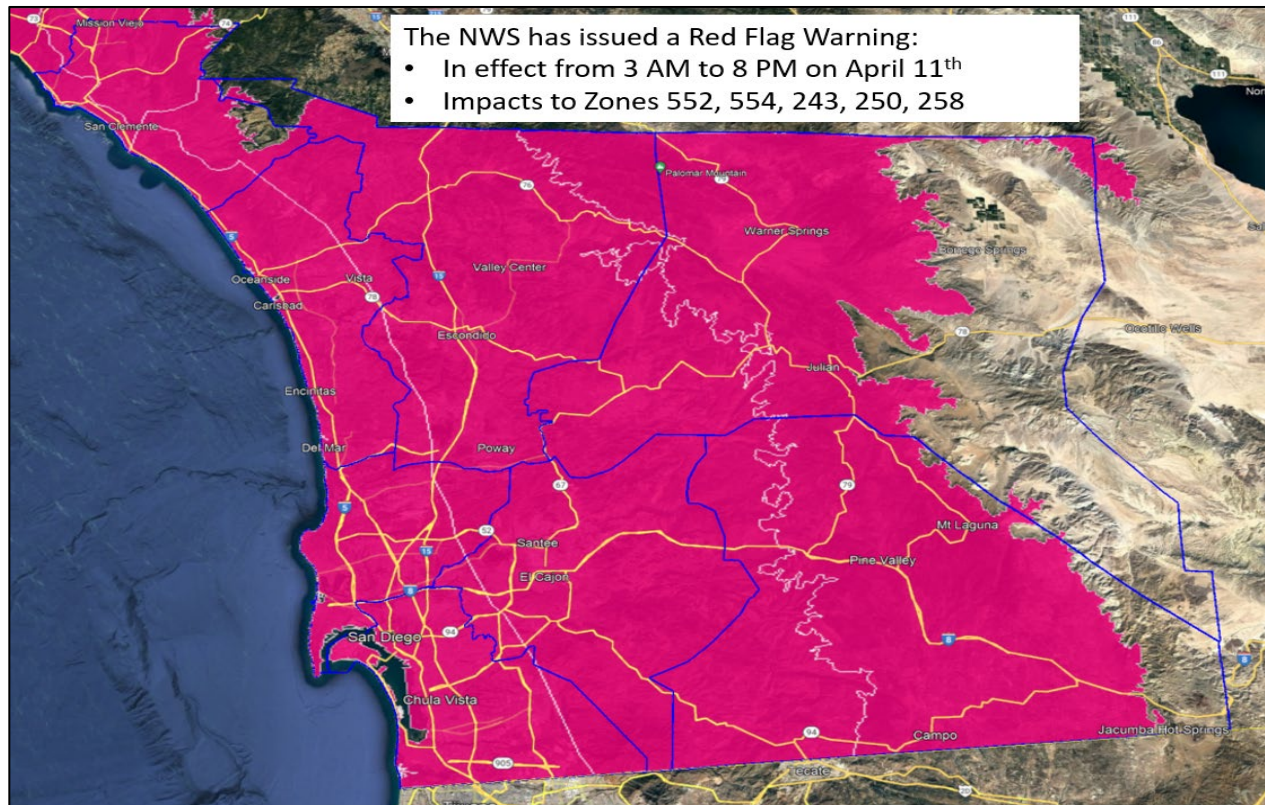
SCENARIO UPDATE

It is currently 48 hours in advance of an anticipated PSPS event. SDG&E is in Stage 1 of their PSPS response.

Weather Forecast

- Forecast models in advance of the event indicated that winds would surface in a mountain wave pattern. Such events are known for producing strong winds that occur outside of the “typical” Santa Ana wind footprint and are notoriously difficult to forecast.
- (SDG&E)** To Meteorology: Could you please give us a brief overview of the forecast, threats, and risk at this stage of the scenario?





Fire Potential Index (FPI) and SAWTI Outlook

	Sun 4/09	Mon 4/10	Tue 4/11	Wed 4/12	Thu 4/13	Fri 4/14	Sat 4/15
ME	Elevated 13	Elevated 14	Extreme 16	Elevated 14	Elevated 14	Elevated 14	Elevated 14
RA	Elevated 13	Elevated 14	Extreme 16	Elevated 14	Elevated 14	Elevated 14	Elevated 14
EA	Elevated 13	Elevated 13	Extreme 16	Elevated 14	Elevated 14	Elevated 13	Elevated 13
NE	Elevated 13	Elevated 13	Extreme 16	Elevated 14	Elevated 14	Elevated 13	Elevated 13
OC	Elevated 12	Elevated 13	Extreme 15	Elevated 14	Elevated 13	Elevated 12	Normal 11
NC	Normal 11	Elevated 13	Extreme 15	Elevated 13	Elevated 12	Normal 11	Normal 11
BC	Normal 11	Elevated 13	Extreme 15	Elevated 13	Elevated 12	Normal 11	Normal 11
CM	Normal 11	Elevated 13	Extreme 15	Elevated 13	Elevated 12	Normal 11	Normal 11

Red Flag Warning 48 Hours

SANTA ANA WILDFIRE THREAT INDEX			
Zones	Sun/Apr 9	Mon/Apr 10	Tue/Apr 11
Zone 1: LA-Ventura			
Zone 2: Orange-Inland Empire			
Zone 3: San Diego			
Zone 4: Santa Barbara			

NO RATING
Winds are either not expected, will not contribute to significant fire activity.

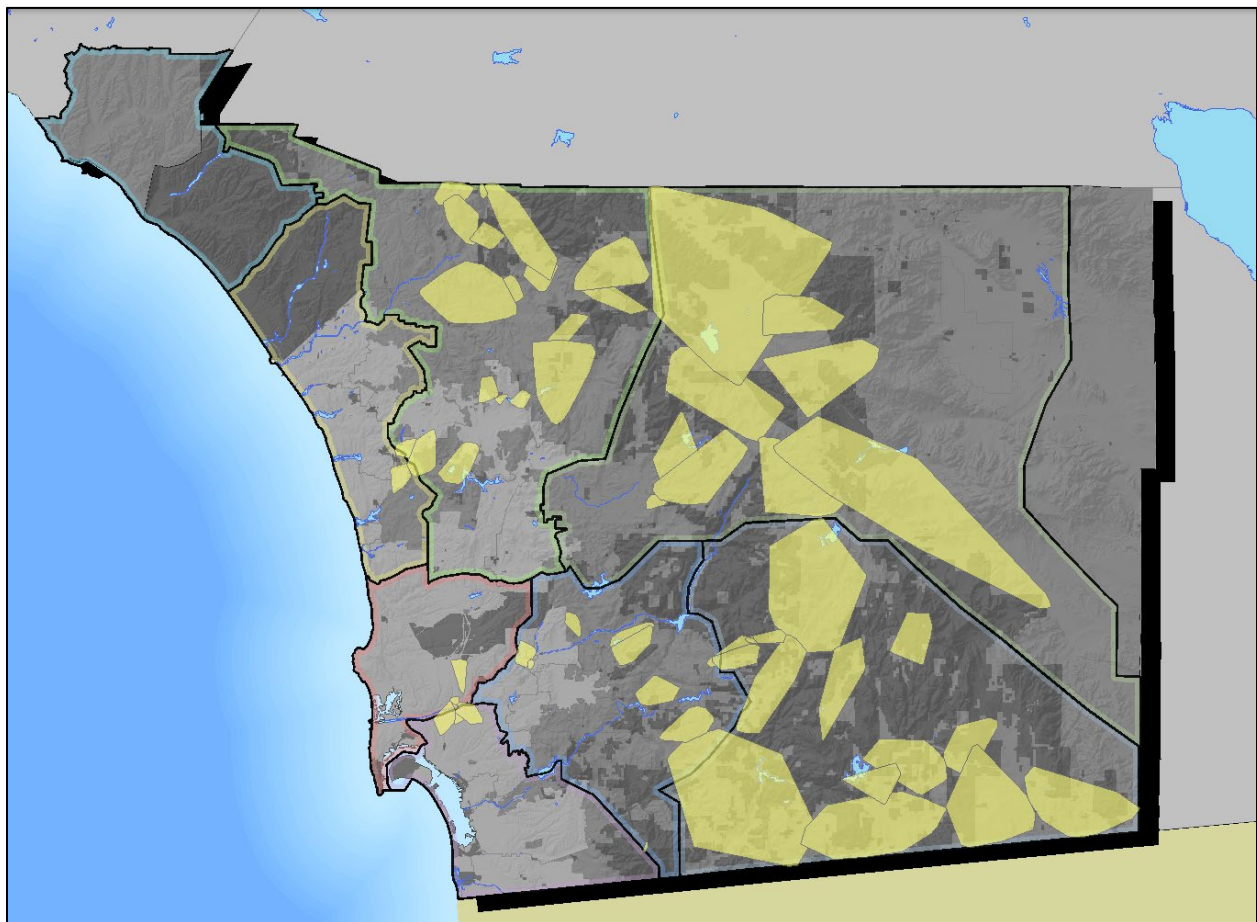
MARGINAL
Upon ignition, fires may grow rapidly.

MODERATE
Upon ignition, fires will grow rapidly and will be difficult to control.

HIGH
Upon ignition, fires will grow very rapidly, will burn intensely, and will be very difficult to control.

EXTREME
Upon ignition, fires will have extreme growth, will burn very intensely, and will be uncontrollable.

GIS Potential Areas for PSPS at 48 Hours



DISCUSSION QUESTIONS

Operational Considerations

1. **(SDG&E)** Meteorology, can you discuss the changes in the forecast from 72 to 48 hours, and what types of information is now available to responders for more detailed planning?
2. **(SDG&E)** [OIC] What are your main concerns and considerations at this point in the response?

Notifications/Communications

1. **(SDG&E) (EM & Public Affairs)** How does this updated circuit list impact public safety partner notifications?
 - a. Please describe what data is now available on the public safety partner portal and how public safety partners access it.
2. **(Stakeholders)** Public safety partners, how is this information provided by SDG&E regarding the potential PSPS impacted communities utilized by your jurisdiction?
 - a. **(SDG&E Liaison)** How can public safety partners discuss any questions or concerns they may have at this stage of the response with SDG&E?
3. **(SDG&E)** Customer notifications begin at this point in the response, please provide an overview of what notifications are provided to customers and via what means?
4. **(SDG&E) {Web}** How is this more targeted list of impacted communities provided to the general public?

Customer Programs/Services

1. **(SDG&E)** What customer programs/services is SDG&E implementing at this stage, to include support for AFN and medical baseline customers?
 - a. How does outreach to AFN Customers occur?
2. **(Stakeholders)** 211, Can you please discuss your response posture at this point, how you get information from SDG&E and any concerns you would have at this stage?
3. **(Stakeholders)** FACT, Can you please provide an overview of the level of support you provide and what actions you'd be taking at the 48-hour prior mark given the scope of this incident?
 - a. Note: If not in attendance ask AFN about the CBO support, we receive from FACT, Salvation Army, and other partners.
4. **(Stakeholders)** Salvation Army, please describe your operational posture at the point in the response. Does the large scope of this potential incident significantly change your operations?

Operational Impacts

1. **(Stakeholders)** San Diego County, can you please discuss your posture at 48 hours before an expected PSPS, what coordination occurs with jurisdictions, and what information you would need from SDG&E?
2. **(Stakeholders)** This incident is projected to potentially involve Tier 2 communities that don't often fall within a potential PSPS scope such as City of San Diego. What would jurisdictions that don't typically fall within the PSPS scope do at this stage to prepare? What if any additional resources or support would you need from SDG&E, SD County, or other entities?

PSPS Tools/Technology

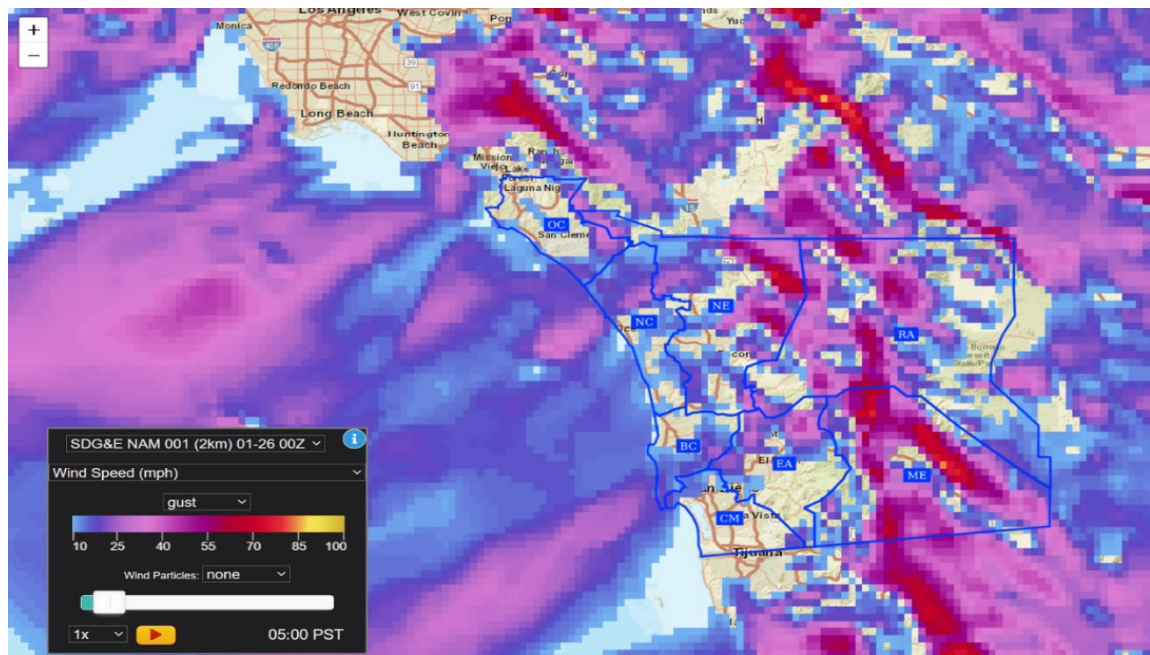
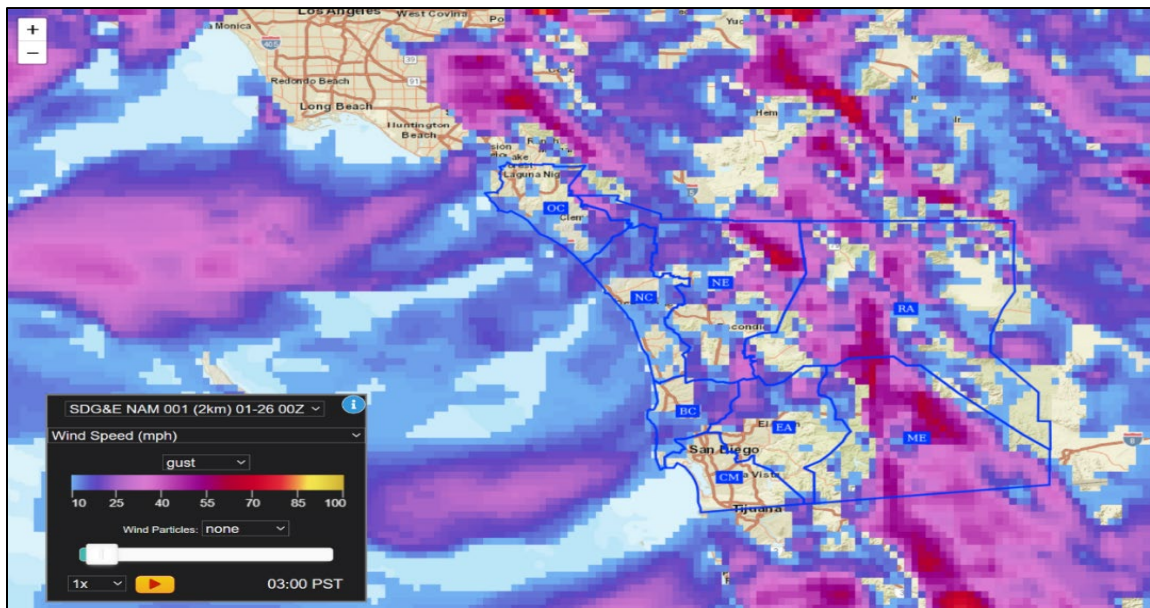
1. **(SDG&E)** What GIS and mapping products are available at this stage and how are they shared with public safety partners?
2. **(SDG&E)** Optional: What is the process to implement PSPS Portal automation? What if any back-up mechanisms are available if automation fails?

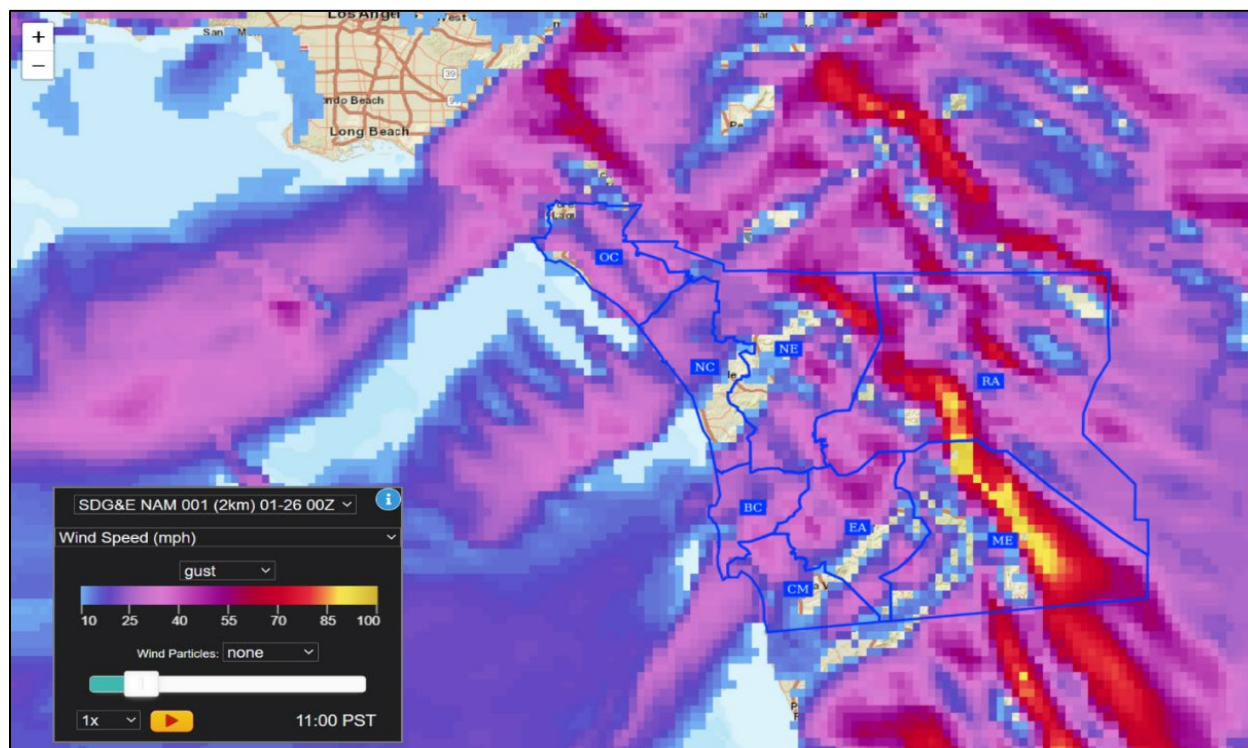
SCENARIO UPDATE

It is currently 24 hours in advance of an anticipated PSPS event. SDG&E is in Stage 1 of their PSPS response.

Weather Forecast

- Forecast models in advance of the event indicated that winds would surface in a mountain wave pattern. Such events are known for producing strong winds that occur outside of the “typical” Santa Ana wind footprint and are notoriously difficult to forecast.
- (SDG&E) To Meteorology: Could you please give us a brief overview of the forecast, threats, and risk at this stage of the scenario?







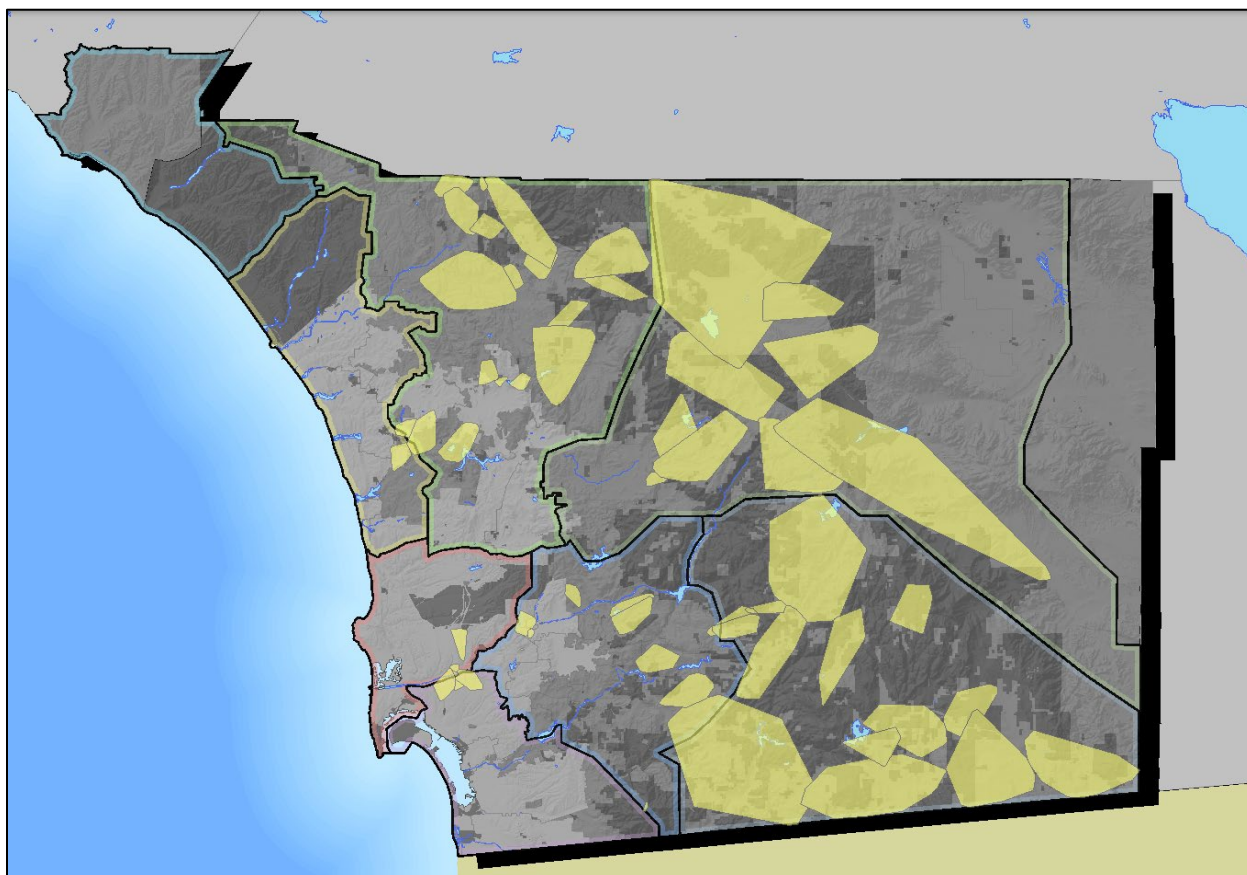
Fire Potential Index (FPI) and SAWTI Outlook

	Mon 4/10	Tue 4/11	Wed 4/12	Thu 4/13	Fri 4/14	Sat 4/15	Sun 4/16
ME	Elevated 14	Extreme 16	Elevated 14	Elevated 14	Elevated 14	Elevated 14	Elevated 12
RA	Elevated 14	Extreme 16	Elevated 14	Elevated 14	Elevated 14	Elevated 14	Elevated 12
EA	Elevated 13	Extreme 16	Elevated 14	Elevated 13	Elevated 13	Elevated 13	Elevated 12
NE	Elevated 13	Extreme 16	Elevated 14	Elevated 13	Elevated 13	Elevated 13	Elevated 12
OC	Elevated 13	Extreme 15	Elevated 14	Elevated 13	Elevated 12	Normal 11	Normal 11
NC	Elevated 13	Extreme 15	Elevated 13	Elevated 12	Normal 11	Normal 11	Normal 11
BC	Elevated 13	Extreme 15	Elevated 13	Elevated 12	Normal 11	Normal 11	Normal 11
CM	Elevated 13	Extreme 15	Elevated 13	Elevated 12	Normal 11	Normal 11	Normal 11

Red Flag Warning at 24 Hours

	SANTA ANA WILDFIRE THREAT INDEX		
Zones	Mon/Apr 10	Tue/Apr 11	<div data-bbox="878 268 1040 359"> NO RATING Winds are either not expected, will not contribute to significant fire activity. </div> <div data-bbox="878 359 1040 449"> MARGINAL Upon ignition, fires may grow rapidly. </div> <div data-bbox="878 449 1040 539"> MODERATE Upon ignition, fires will grow rapidly and will be difficult to control. </div> <div data-bbox="878 539 1040 630"> HIGH Upon ignition, fires will grow very rapidly, will burn intensely, and will be very difficult to control. </div> <div data-bbox="878 630 1040 854"> EXTREME Upon ignition, fires will have extreme growth, will burn very intensely, and will be uncontrollable. </div>
Zone 1: LA-Ventura			
Zone 2: Orange-Inland Empire			
Zone 3: San Diego			
Zone 4: Santa Barbara			

GIS Potential Areas for PSPS at 24 Hours



DISCUSSION QUESTIONS

Operational Considerations

1. **(SDG&E) (EM, DOC-E)** Typically, the circuit list gets narrower from 48 to 24 hours. In this instance, the projected scope remains the same, how does that impact the response operation?

Notifications/Communications

1. **(SDG&E)** Given that the circuit list did not change from 48 hours are there any changes to what notifications are done at the 24-hour mark?
2. **(SDG&E)** With the large potential scope of this event, are there concerns with our website's ability to handle increased traffic? What if any redundancies exist?
3. **(SDG&E) (Sit Stat)** Can you please describe the reporting and data gathering that is done, including regulatory notifications to CalOES?
4. **(Stakeholders)** CalOES, please describe your operational posture at this point and how the information shared by SDG&E is utilized for planning and reporting.

Customer Programs/Services

1. **(SDG&E)** How are partners from critical infrastructure notified and what coordination occurs at this stage of the event?
2. **(SDG&E)** What planning occurs for CRCs and when do they open?
 - a. Given the scope of this incident are there any staffing concerns with the ability to open the necessary number of CRCs?
 - b. Is SDG&E able to open CRCs in Tier 2 communities that aren't normally impacted if de-energization does occur in areas like San Diego City that aren't normally impacted?

Operational Impacts

1. **(Stakeholders)** What potential operational impacts would your organization have to plan for at this stage of PSPS operations?
 - a. Do you have the appropriate equipment, plans, processes, and procedures in place to mitigate any potential impacts to your operations?
 - b. How can SDG&E assist you with your current PSPS planning efforts?

MODULE 2 – DECISION TO DE-ENERGIZE/ DE-ENERGIZATION INITIATED

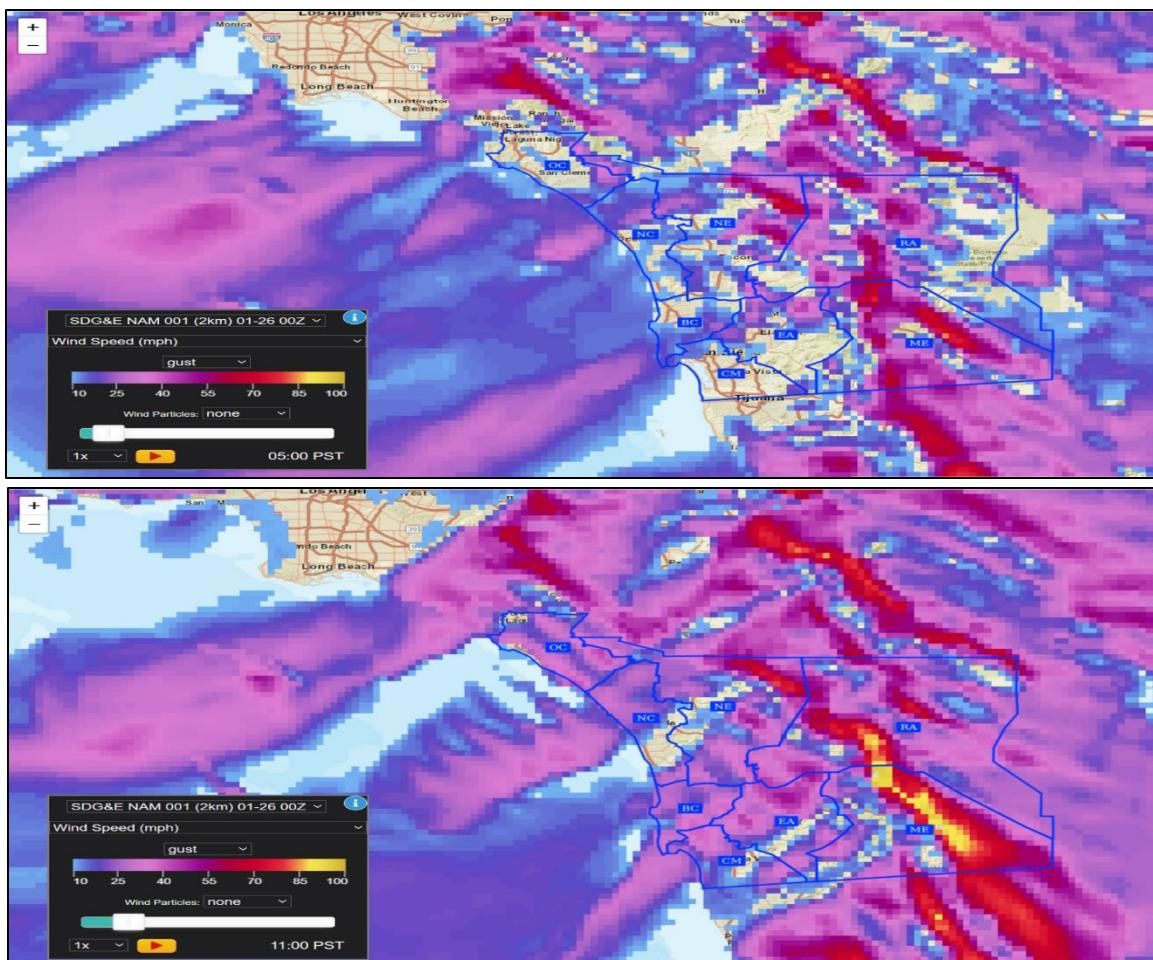
SCENARIO UPDATE

Scenario Overview

This module will now cover PSPS Stage 2 and Stage 3. SDG&E circuits have met PSPS thresholds, and the decision has been made to initiate de-energization in the specified circuits. A wildfire has started in the City of San Diego and relevant public safety partners have begun emergency response efforts to control the fire. The SDG&E EOC is now at a Level II activation. SDG&E Meteorology has provided the weather forecast below:

Weather Forecast


- Forecast models in advance of the event indicated that winds would surface in a mountain wave pattern. Such events are known for producing strong winds that occur outside of the “typical” Santa Ana wind footprint and are notoriously difficult to forecast.
- (SDG&E)** To Meteorology: Could you please give us a brief overview of the forecast, threats, and risk at this stage of the scenario?



Fire Potential Index (FPI) and SAWTI Outlook

	Tue 4/11	Wed 4/12	Thu 4/13	Fri 4/14	Sat 4/15	Sun 4/16	Mon 4/17
ME	Extreme 16	Elevated 14	Elevated 14	Elevated 14	Elevated 13	Elevated 12	Normal 11
RA	Extreme 16	Elevated 14	Elevated 14	Elevated 14	Elevated 13	Elevated 12	Normal 11
EA	Extreme 16	Elevated 14	Elevated 13	Elevated 13	Elevated 13	Elevated 12	Normal 11
NE	Extreme 16	Elevated 14	Elevated 13	Elevated 13	Elevated 13	Elevated 12	Normal 11
OC	Extreme 15	Elevated 14	Elevated 13	Elevated 12	Normal 11	Normal 11	Normal 11
NC	Extreme 15	Elevated 13	Elevated 12	Normal 11	Normal 11	Normal 11	Normal 10
BC	Extreme 15	Elevated 13	Elevated 12	Normal 11	Normal 11	Normal 11	Normal 10
CM	Extreme 15	Elevated 13	Elevated 12	Normal 11	Normal 11	Normal 11	Normal 10

Red Flag Warning

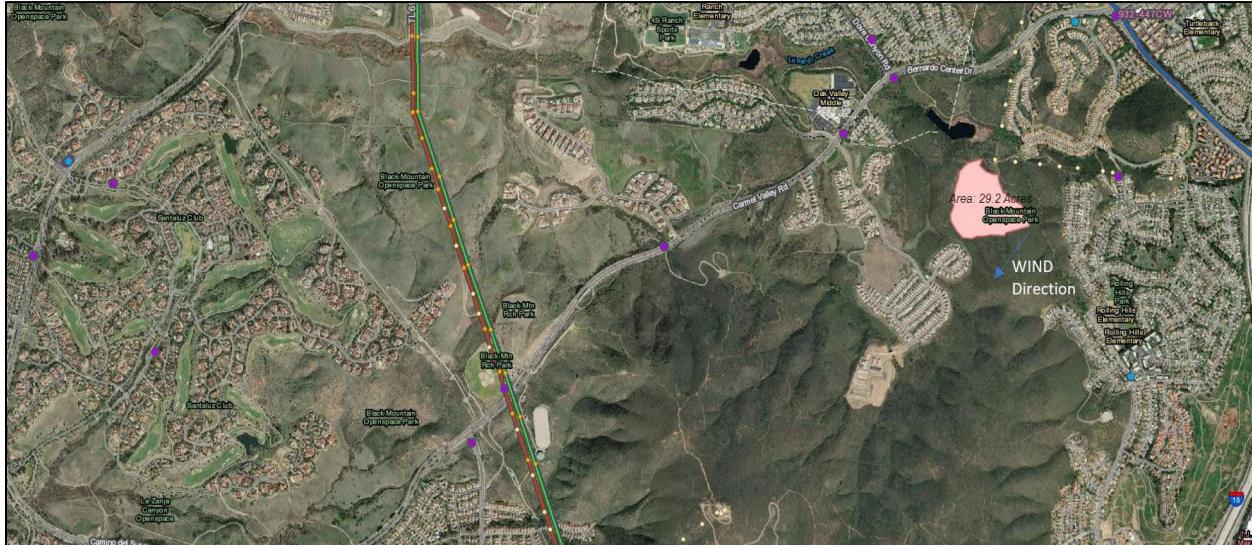
 SANTA ANA WILDFIRE THREAT INDEX	
Zones	Tue/Apr 11
Zone 1: LA-Ventura	
Zone 2: Orange-Inland Empire	
Zone 3: San Diego	
Zone 4: Santa Barbara	

NO RATING	Winds are either not expected, will not contribute to significant fire activity.
MARGINAL	Upon ignition, fires may grow rapidly.
MODERATE	Upon ignition, fires will grow rapidly and will be difficult to control.
HIGH	Upon ignition, fires will grow very rapidly, will burn intensely, and will be very difficult to control.
EXTREME	Upon ignition, fires will have extreme growth, will burn very intensely, and will be uncontrollable.

FIRE SUMMARY

Fire Update 1

At 5am, 911 dispatcher received a call for a reported vegetation fire in the northeast area of Black Mountain within the City of San Diego. On arrival at scene, the first in fire unit reports that the fire is 25 acres with an immediate structure threat and to initiate evacuations. Hikers frequent this area and SDG&E equipment is all underground at this location. The fire is moving in a southwestern direction due to the wind.



Fire Update 2

The fire on Black Mountain within the City of San Diego has grown to 728 acres and has caused minor damage to some residential homes and Tel/Com equipment. The fire continues to grow with the wind in a southwestern direction, but firefighters have been successful in directing the fire away from most neighborhoods, (although the fire is still threatening homes and nearby neighborhoods due to proximity).



DISCUSSION QUESTIONS

Facilitator Notes

The discussion questions below have been categorized for the following participant groups:

- SDG&E-specific discussion questions are noted in **Green**.
- Stakeholders-specific discussion questions are noted in **Blue**.
- Questions that should be directed towards all participants are noted in **Red**.

Operational Considerations

1. **(SDG&E)** Discuss your overarching responsibilities timeframe of PSPS operations.
 - a. In Stage 2, describe the process for determining the decision to de-energize. (OIC)
 - b. In Stage 3, describe the process for initiating de-energization. (DOC-E)
2. **(Stakeholders)** City of San Diego, given the fire within your jurisdiction please describe what actions would be taken, specifically regarding evacuation, sheltering, and public information.
 - a. What if any additional resources or coordination would you require from SDG&E?
3. **(SDG&E)** How does the introduction of a wildfire in the service territory impact PSPS operations?
 - a. What additional responsibilities should be taken into consideration that may modify current EOC operations?
 - i. Fire coordinators, please describe your role and ability to support both a wildfire and a PSPS response simultaneously.
 - b. (Liaison) How are requests for information and resources from external agencies coordinated?
 - c. **(Fire Coordination)** What would need to be considered if the wildfire was in the potential scope of PSPS de-energization, yet the area was currently energized?
4. **(Stakeholders)** City of SD, what impacts does a wildfire response with the potential for PSPS bring to your operation? How does planning for potential loss of power outside of the evacuation area impact planning?

Customer Programs/Services

1. **(SDG&E)** What programs/services are available to customers (e.g., Mobile CRCs)?
 - a. How are you informing the public of the provided programs/services?
 - b. Would any currently activated customer programs/services be affected by the wildfire?
 - c. If evacuees go to a CRC, what communication and coordination would occur to ensure they get additional services (such as sheltering) that they may need as a result of the fire?

Notifications/Communications

1. **(SDG&E)** (EM & Cust. Srvs) What customer and/or governmental agency notifications are being made in this stage once de-energizations begin?
2. **(Stakeholders)** How are sheltering and evacuation notifications being made to impacted personnel and the general public?
3. **(Stakeholders)** For City of San Diego, public information needs to occur regarding PSPS potential impacts and resources at the same time as real-time information about the wildfire. What strategies are used to provide both messages simultaneously to the impacted communities?

PSPS Tools/Technology

1. **(Stakeholders)** (Optional) How do you utilize the real-time information provided by SDG&E on de-energization status? What operational updates/data points in existing PSPS tools/dashboards are most critical in your organization's decision-making processes?

Optional Discussion Topics

1. **(SDG&E)** Describe the process of simultaneously re-energizing while de-energizing circuits.

This Page Intentionally Left Blank.

MODULE 3 – INITIATING RE-ENERGIZATION PROTOCOLS/ALL PSPS LINES RE-ENERGIZED

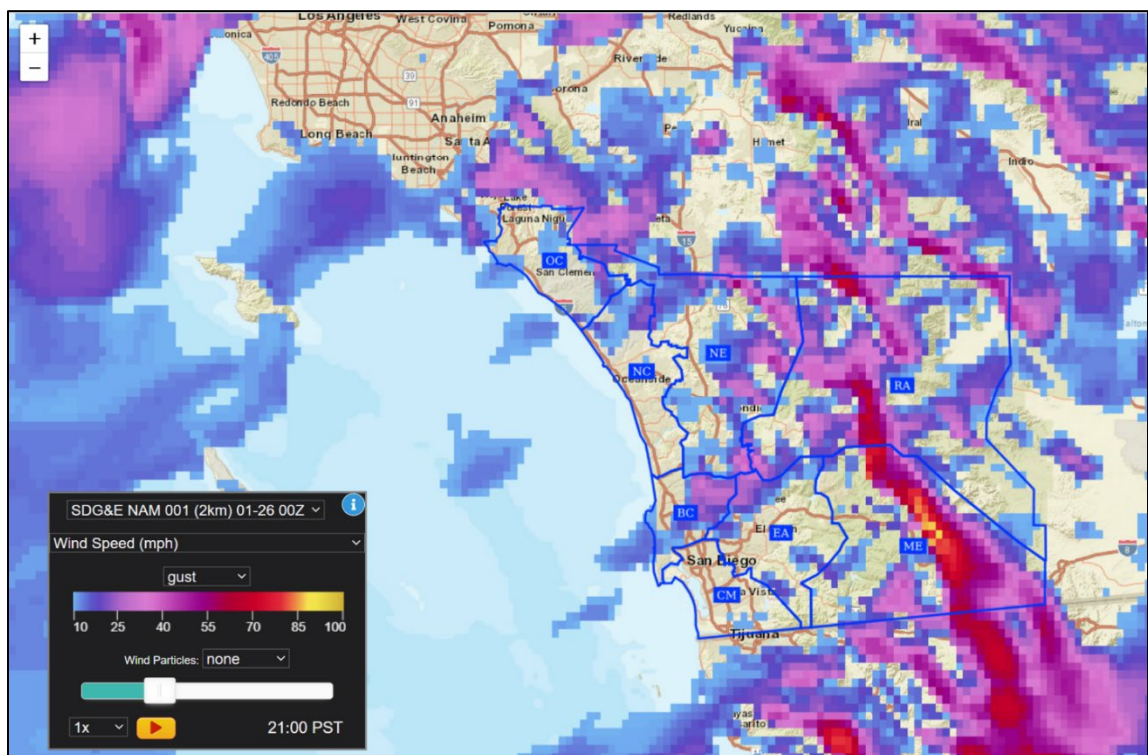
SCENARIO UPDATE

Scenario Overview:

This module will now cover PSPS Stage 4 and Stage 5. At this time, PSPS conditions have passed, and SDG&E has begun the re-energization process for the circuits that were taken down. Emergency response operations related to the City of San Diego wildfire have also concluded. The SDG&E EOC is still activated at this time, but demobilization discussions have begun. SDG&E Meteorology has provided the following updates:

Weather Forecast:

- Forecast models in advance of the event indicated that winds would surface in a mountain wave pattern. Such events are known for producing strong winds that occur outside of the “typical” Santa Ana wind footprint and are notoriously difficult to forecast.
- (SDG&E)** To Meteorology: Could you please give us a brief overview of the forecast, threats, and risk at this stage of the scenario?



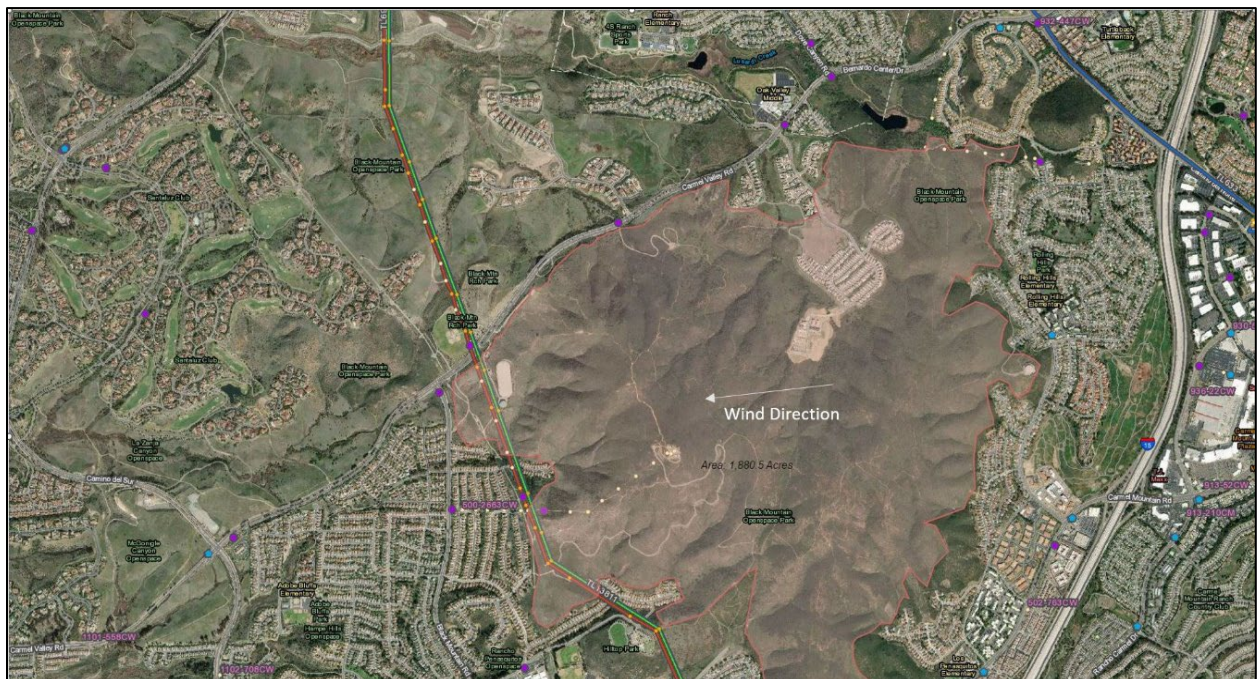
Fire Potential Index (FPI) Outlook:

	Tue 4/11	Wed 4/12	Thu 4/13	Fri 4/14	Sat 4/15	Sun 4/16	Mon 4/17
ME	Extreme 16	Elevated 14	Elevated 14	Elevated 14	Elevated 13	Elevated 12	Normal 11
RA	Extreme 16	Elevated 14	Elevated 14	Elevated 14	Elevated 13	Elevated 12	Normal 11
EA	Extreme 16	Elevated 14	Elevated 13	Elevated 13	Elevated 13	Elevated 12	Normal 11
NE	Extreme 16	Elevated 14	Elevated 13	Elevated 13	Elevated 13	Elevated 12	Normal 11
OC	Extreme 15	Elevated 14	Elevated 13	Elevated 12	Normal 11	Normal 11	Normal 11
NC	Extreme 15	Elevated 13	Elevated 12	Normal 11	Normal 11	Normal 11	Normal 10
BC	Extreme 15	Elevated 13	Elevated 12	Normal 11	Normal 11	Normal 11	Normal 10
CM	Extreme 15	Elevated 13	Elevated 12	Normal 11	Normal 11	Normal 11	Normal 10

FIRE SUMMARY

Fire Update 3:

The fire burned over and through Black Mountain within the City of San Diego but is now considered contained and fire crews will be on scene to mop up the remaining hot spots. The fire concluded with a total of 1880.5 acres burned, no loss of life, minor damage to some residential homes, destroyed some Tel/Com equipment, and caused review of specific tie lines and nearby circuits. Repopulation of the evacuation areas has been completed. The city has allowed for SDG&E crews to re-enter the area to survey damage and begin re-energization discussions.



DISCUSSION QUESTIONS

Facilitator Notes

The discussion questions below have been categorized for the following participant groups:

- SDG&E-specific discussion questions are noted in **Green**.
- Stakeholders-specific discussion questions are noted in **Blue**.

Operational Considerations

1. **(SDG&E)** Discuss your overarching responsibilities during this timeframe of PSPS operations.
 - a. What conditions must be met, and actions taken prior to re-energization?
 - i. Ensure patrolling discussed (DOC-E)
 - ii. Discuss re-energization plan (Elec. Commodity Liaison)
 - b. Describe the process for initiating re-energization protocols (Stage 4 & 5).
2. **(SDG&E)** If the wildfire impacted area was de-energized, how would that impact re-energization in that area?
 - a. **(SDG&E)** (Fire Coordinators) If the wildfire was still ongoing, how would that impact re-energization efforts within that community?

Notifications/Communications

1. **(SDG&E)** What notifications are being made during this timeframe regarding the initiation of re-energization and the re-energization of lines?
 - a. Note: Discuss customer notifications, PIO/media, and regulatory

Customer Programs/Services

1. **(Stakeholders)** City of San Diego, as evacuation orders are lifted from the wildfire, what if any recovery services are provided to those affected?
2. **(SDG&E)** What SDG&E resources are available to victims of the wildfire? How would you support recovery and local assistance centers?
3. **(SDG&E)** (CRC) At what point would SDG&E begin discussing deactivated/demobilization of customer programs/services such as CRCs?

PSPS Tools/Technology

1. **(SDG&E)** (Optional) What tools/program features are you utilizing during the re-energization protocols?
 - a. Note: Potential answers GIS, PSP Portal

Deactivation

1. **(SDG&E)** (EM) At what point would you be discussing deactivating your EOC?
2. **(SDG&E)** (EM & PIO) What post-event coordination and analysis occurs to garner feedback and develop lessons learned?

Optional Discussion Topics

1. **(SDG&E)** Discuss the process of de-escalation while preparing for future forecasted PSPS events.
2. **(Stakeholder)** (SD County or CalOES) What if any additional communication or coordination needs would you have if some jurisdictions in the county were being re-energized while others were being de-energized? How are these differing messages deconflicted and clarified for the public?

HOT WASH

Immediately following the Tabletop Exercise, the facilitator will begin leading the player hot wash. It is attended by the Exercise Planning Team, attendees (observers and players), and evaluators. The hot wash is an opportunity for all attendees to describe their immediate impressions of the exercises and provide feedback which ultimately may be captured in the final After-Action Report/Summary Report. For this reason, it affords a valuable opportunity for evaluators to fill in gaps in their notes.

Hot washes allow time for players to address key topics, cross-disciplinary issues, or conflicting recommendations that were identified in earlier discussions. They are also an opportunity for players to comment on how well the exercise was planned and conducted and what improvements could be implemented for future exercises.

The Exercise Planning Team will also electronically distribute the Participant Feedback Form for players to submit.

CLOSING REMARKS/ENDEx

Following the closing remarks from an SDG&E senior representative, the facilitator can take this time to close out the exercise. It will be an opportunity to discuss the following:

- Provide a summary of the main points.
- Take time to recognize contributions. Acknowledge effort and achievement.
- Let participants know how they can continue their learning and follow up if they have questions.
- Thank participants and provide instructions for filling out the feedback form.
- Remind participants that the TTX is a part of SDG&E's PSPS training efforts and the Full-Scale Exercise will take place on May 1-2.

This Page Intentionally Left Blank.

APPENDIX A: FACILITATOR GUIDANCE

WELCOME & EXERCISE OVERVIEW

SLIDE	TIME	TOPIC/ ISSUE	FACILITATOR NOTES/ QUESTIONS
1	8:00 AM	Call to Order/ Title Slide/ Welcome	<p>When participants have arrived:</p> <ul style="list-style-type: none"> • Call room and participants to order • Introduce topic of exercise: PSPS • Introduce self and SDG&E support • Provide brief opening remarks and role during exercise
2	8:05 AM	Welcome Remarks	Introduce Brian D'Agostino as Officer in Charge for the exercise and call upon them to offer opening remarks
3	8:10 AM	Administrative Remarks	Provide safety and administrative remarks for participants
4	8:12 AM	Exercise Schedule	Provide approximate timeline of each topic in the exercise schedule
5	8:15 AM	Exercise Overview	Introduce 'Exercise Overview' section of PowerPoint
6	8:15 AM	Exercise Overview	<p>Briefly review the following with participants:</p> <ul style="list-style-type: none"> • Scope • Purpose • Structure • Scenario
7	8:20 AM	Exercise Objectives	Read the objectives on the slides for participants
8	8:25 AM	Exercise Guidelines	Read the exercise guidelines on the slides for participants
9	8:30 AM	Questions	Address any questions from participants prior to StartEx

MODULE ONE – ACTIVATING PSPS PROTOCOLS/POTENTIAL TO DE-ENERGIZE

SLIDE	TIME	TOPIC/ ISSUE	FACILITATOR NOTES/ QUESTIONS
10	8:30 AM	Module 1: Title Slide	Briefly introduce title slide for Module 1 – Stage 1
11-14	8:30 AM	Module 1: Exercise Scenario	<p>Brief participants on scenario over next several slides:</p> <ul style="list-style-type: none"> • Weather conditions • Weather products from partners • FPI Outlook • Community impacts
15	8:35 AM	Module 1: Discussion Questions Title Slide	Briefly introduce start to Module 1 discussion questions
16	8:35 AM	Module 1: Discussion Questions	<p>Briefly review topics that will be covered in Module 1 before asking the questions listed on pages 10 and 11</p> <p>As you guide the discussion through the question, keep in mind the following points:</p> <ul style="list-style-type: none"> • For questions with specific time prompts, be sure to follow up with participants to discuss changes in each time frame • When discussing customer programs/services, guide responses towards AFN • Participants will discuss their role(s) in the portal automation process, but there will not be a portal demonstration in the TTX <ul style="list-style-type: none"> ○ If asked, mention FSE portal demonstration • Keep track of time and omit questions that may have already been addressed by participants <ul style="list-style-type: none"> ○ There will be more questions than time allows – be sure to ask the priority questions marked under each category to cover a broad topic
17	9:45 AM	Break	End Module 1 and begin 15-minute break for participants

MODULE TWO – DECISION TO DE-ENERGIZE/DE-ENERGIZATION INITIATED

SLIDE	TIME	TOPIC/ ISSUE	FACILITATOR NOTES/ QUESTIONS
18	10:00 AM	Module 2: Title Slide	Briefly introduce title slide for Module 2 – Stage 2 and Stage 3
19-23	10:00 AM	Module 2: Exercise Scenario Update	<p>Brief participants on scenario over next several slides:</p> <ul style="list-style-type: none"> • Updated weather conditions • Updated weather products from partners • SAWTI • FPI Outlook • Current and forecasted conditions
24	8:35 AM	Module 2: Discussion Questions Title Slide	Briefly introduce start to Module 2 discussion questions
25	10:05 AM	Module 2: Discussion Questions	<p>Briefly review topics that will be covered in Module 2 before asking the questions listed on pages 12 and 13.</p> <p>As you guide the discussion through the question, keep in mind the following points:</p> <ul style="list-style-type: none"> • When discussing customer programs/services, guide responses towards AFN • Keep track of time and omit questions that may have already been addressed by participants <ul style="list-style-type: none"> ○ There will be more questions than time allows – be sure to ask the priority questions marked under each category to cover a broad topic • If time allows, segue into Module 3 by asking questions regarding simultaneous re-energization/de-energization
26	11:00 AM	Module 3: Title Slide	End of Module 2 and start Module 3

MODULE THREE – INITIATING RE-ENERGIZATION PROTOCOLS/ ALL PSPS LINES RE-ENERGIZED

SLIDE	TIME	TOPIC/ ISSUE	FACILITATOR NOTES/ QUESTIONS
26	11:00 AM	Module 3: Title Slide	Briefly introduce title slide for Module 3 – Stage 4 and Stage 5
27	11:00 AM	Module 3: Exercise Scenario	Brief participants on scenario over next several slides: <ul style="list-style-type: none"> • Updated weather conditions • Update on re-energization process
28	11:03 AM	Module 3: Discussion Questions Title Slide	Briefly introduce start to Module 3 discussion questions
29	11:05 AM	Module 3: Discussion Questions	<p>Briefly review topics that will be covered in Module 3 before asking the questions listed on pages 14 and 15.</p> <p>As you guide the discussion through the question, keep in mind the following points:</p> <ul style="list-style-type: none"> • When discussing customer programs/services, guide responses towards AFN • Keep track of time and omit questions that may have already been addressed by participants <ul style="list-style-type: none"> ○ There will be more questions than time allows – be sure to ask the priority questions marked under each category to cover a broad topic • If time allows, segue into post-event discussion by asking questions regarding recovery operations following re-energization before ending the exercise
30	11:45 AM	ENDEX	End the facilitated discussion and end the exercise

HOTWASH

SLIDE	TIME	TOPIC/ISSUE	FACILITATOR NOTES/ QUESTIONS
31	11:45	Hot Wash	<p>Immediately segue into the hotwash, during which the facilitator should go around the room to request comments, critical feedback, recommendations for future exercises, general observations, and operational recommendations</p> <p>The Facilitator should be sure to receive feedback from players, observers, and evaluators</p>

ENDING REMARKS/ENDEX

SLIDE	TIME	TOPIC/ISSUE	FACILITATOR NOTES/ QUESTIONS
32	11:55 AM	Closing Remarks	Call upon Thom Porter to provide closing remarks
33	12:00 PM	ENDEX	Adjourn the exercise to begin the networking lunch and optional EOC Tour



This Page Intentionally Left Blank.

APPENDIX B: EXERCISE SCENARIO TIMEFRAME



MODULE	SCENARIO	TOPICS OF DISCUSSION
Module One	<ul style="list-style-type: none"> Stage 1 of PSPS Operations 	<ul style="list-style-type: none"> Differences in operations/ expectations between PSPS & other emergency responses Customer programs/ services provided, to include addressing AFN Communication (primary & alternate) PSPS tools/ technology PSPS portal automation discussion
Module Two	<ul style="list-style-type: none"> Stages 2 and 3 of PSPS Operations Onset of PSPS event with circuits meeting PSPS thresholds Level II activation and de-energization conducted Wildfire ignites on Black Mountain in San Diego, CA within SDG&E service territory 	<ul style="list-style-type: none"> De-energization processes Differences in operations/ expectations between PSPS & other emergency responses Customer programs/ services provided, to include addressing AFN Communication (primary & alternate) PSPS tools/ technology <i>Optional topic</i> – Process of re-energizing while de-energizing during segue to Module 3
Module Three	<ul style="list-style-type: none"> Stages 4 and 5 of PSPS Operations PSPS conditions have passed San Diego Wildfire emergency response operations have concluded 	<ul style="list-style-type: none"> Customer programs/ services provided, to include addressing AFN Communication (primary & alternate) PSPS tools/ technology <i>Optional topic</i> – Recovery/ Post-Event discussion to occur following Re-energization discussion



This Page Intentionally Left Blank.

APPENDIX C: EXERCISE STAFF AND PLAYERS

ROLE	NAME	ORGANIZATION
Player	Ray Chaney	211
Player	Kim Young	City of Carlsbad
Player	Michael Luna	City of Del Mar
Player	Hannah Chasteene	City of San Diego
Player	Izzy Murguia	City of Lemon Grove
Player	Barbara Ayers	County of San Diego, OES
Player	Cody Gallagher	County of San Diego, OES
Player	Scott Lemieux	Camp Pendleton
Player	Patrick Buttron	CalOES Southern Region
Player	Chris Herring	CalOES Southern Region
Player	Cruz Ponce	CalOES Southern Region
Player	Dan Weiss	CalOES Southern Region
Player	Christine Asaro	SDG&E
Player	Morgan Ehlke	SDG&E
Player	Brian Fleming	SDG&E
Player	Helen Gao	SDG&E
Player	Allison Torres	SDG&E
Player	David Lawrence	SDG&E
Player	Brian D'Agostino	SDG&E
Player	Tashonda Taylor	SDG&E
Player	Dana Golan	SDG&E
Player	Thom Porter	SDG&E
Player	Mona Freels	SDG&E
Player	Dan King	SDG&E
Player	Shewit Woldegiorgis	SDG&E
Player	Joe Britton	SDG&E
Player	Danielle DeClerq	SDG&E
Player	Victor Roosen	SDG&E
Player	Tom Fries	SDG&E
Player	Danielle Kyd	SDG&E
Player	Deborah Booker	SDG&E
Player	Michael Knobbe	SDG&E
Player	Katie Giannecchini	SDG&E
Player	Ray Duncan	SDG&E
Player	Daryll Pina	SDG&E
Player	Sara Nordin	SDG&E
Observer	Syed Alam	T-Mobile
Observer	Jeff Jubera	T-Mobile
Observer	Josh Alvarado	AT&T
Observer	Renee Marfia	AT&T
Observer	Ankur Patel	AT&T
Observer	Agnes Luster	AT&T
Observer	Dru Dunton	CPUC
Observer	Doug Huls	CalOES Southern Region

ROLE	NAME	ORGANIZATION
Observer	Jennifer Champlin	Cox Communications
Observer	Marlon King	City of Chula Vista
Observer	Teresa Greenhalgh	County of San Diego, Fire Authority
Observer	Janell Hariman	Orange County Sheriff, Emergency Management
Observer	Kevin McArthur	Orange County Sheriff, Emergency Management
Observer	Susan Davison	Orange County Power Authority
Observer	Agustin Lee	Orange County Power Authority
Observer	Vicki Osborn	Water Emergency Response Org of Orange County
Staff	Jessica Kunert	SDG&E
Staff	Sarah Glady	SDG&E
Staff	Milo Warner	SDG&E
Staff	Jonathan Baltazar	SDG&E
Staff	Kim Nguyen	Prestige Analytics
Staff	Justin Cox	Prestige Analytics
Staff	Staphany Lu	Prestige Analytics
Staff	Josselyn Molina	Prestige Analytics
Staff	Deanna McMahan	Prestige Analytics